



3695 44th Street SE - Grand Rapids, MI 49512 - (P) 616-971-3420 (F) 616-971-3421 www.mepcollc.com

STEAM TRAP REPAIR PARTS MANUAL

REFER TO FORM 17501 FOR PRICES

INDEX

PAGE

Radiator Traps - Low Pressure (Recent Models)	2
Radiator Traps - Low Pressure (Older Models)	2
Float & Thermostatic Traps - Prior to 1929.	3
Repair Cartridge (CA-) Units & (MEP-) Assemblies	3
Float & Thermostatic Traps #'s 30, 31 series	4
Float & Thermostatic Traps #'s 40, 41& 44 series.	5
Float & Thermostatic Traps - 48 & 46 series	6
Thermostatic Traps - High Pressure.	7
Bucket Traps -OB,OB-A, OBS,OBS-A & OBS-B	9
Float & Thermostatic Gaskets	10

RADIATOR TRAPS (LOW PRESSURE) RECENT MODELS

SIZE TAPPING			PART NUMBERS				
			1 1/2"	3 4"	1"	3 4" x 1 1/2"	1 1/2"
REF. NUMBER	ITEM	TRAP NUMBER	1B, 1C, 1E*	2C, 2E*	3B, 3C	1E-VST	1E-VS
1	Disc Only		C5940	C5941**	C5942**	C5940	C5940
2	Cap & Disc Assembly		C5838	C5860	C5863	ML9916	C5838
3	Renewable Seat before 1990		C8146	C8147	C8148		
4	Union Nut, See Note A)		C347	C346	C745		
5	Union Nipple		C544	C1045	C1004		
6	Cap Gasket		S5537	C5994	C5994		
7	Seat & Disc after 1990 See Note B)		1ESS	2ESS	3CSS		
		ML9684	ML9685	ML9686			

*Denotes present stock models

**Also requires cap gasket

A) Traps with screw in seats made before 1990 have the letters "MR" stamped on the cap. Seats are either monel or stainless steel. Valve is made of brass.

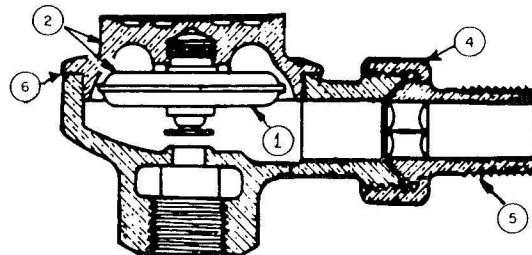
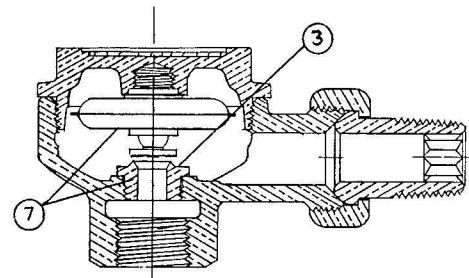
B) Traps with screw in seats after 1990 have the letters "SS" stamped on the cap, valve & seat are stainless steel.

C) 1E Traps with integral seats can be economically repaired by using MEPCO Repair Cartridge # MEP-1950, or cast brass cartridge CA1, see next page.

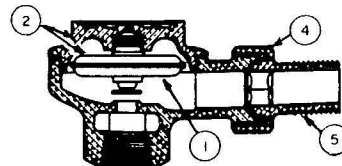
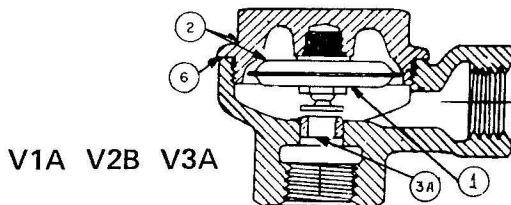
D) Repairs for 2E and 3C traps with integral seats require the cast brass cartridge unit or replacement with whole trap.

E) The following trap wrenches are available:

Trap Cap Wrench - D295
 1 1/2" Spud Wrench - C923
 3/4" Spud Wrench - C922
 1" Spud Wrench - C2134



RADIATOR TRAPS (LOW PRESSURE) OLDER MODELS



REF. NO.	Size Tapping Trap Number ITEM	PART NUMBERS							
		1/2"	1/2"	3/4"	1/2"	1/2" - 3/4"	3/4"	3/4"	3/4"
		V1A V1B	#1 1A D1	V2B V2C	#2 V2 2A**	2B*** D2***	V3A V3B	3A D3	#3 V3
1	Disc Only	C5940	X	C5941	X	X	C5942	X	X
2	Cap & Disc Assembly	C5838	C5838	C5860	C5819	C5860	C5863	C5863	C5819
3	Renewable Seat Screw-in Type	X	C8146*	X	C8147*	C8147	X	C8148	X
4	Union Nut	C347	C347	C346	C347	C346	C346	C346	C346
5	Union Nipple	C544	C544	C1045	C544	C1045	C1045	C1045	C1045
Cap & Disc Repl.		1E	1E	2E	V2 V3	2E	3C	3C	V2 V3
6	Cap Gasket	S5537		C5994	C5996	C5994	C5994	C5994	C5996

*#1, #2 and V2 Traps - Renewable Screw-In Seats no longer available.

**#2A Trap - use Cap, Disc and Gasket, C5860.

***#2B and #D2 Traps were manufactured both with 1/2" and 3/4" tappings.

****Also order cap gasket

NOTES:

a. #1E AP Trap w/nipple 11/16" Longer than standard provides replacement for #2 AP Traps.

b. #2E AP w/nipple 11/16" longer than standard provides replacement for #3 AP Trap.

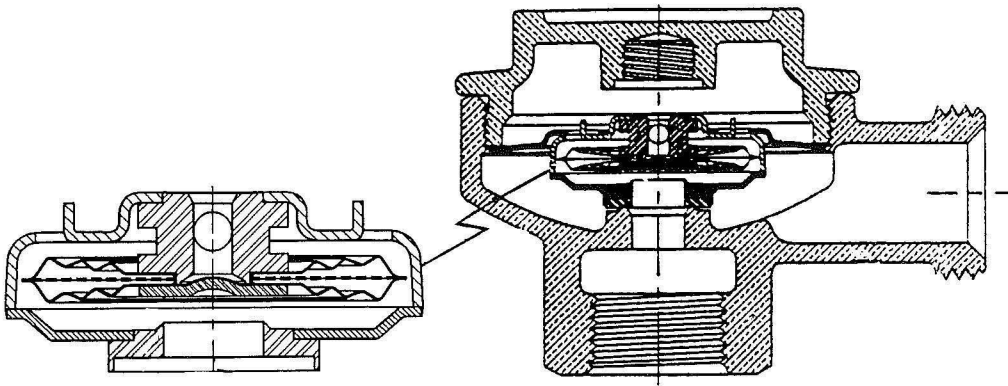
c. #1E Cap and Disc Assembly and Screw-In seat for "SB" Trap (Bellows Type) are furnished to convert them to present design #1E Trap.

d. Victory Line Traps were furnished with cast iron bodies and caps. V1A, V2B, and V3A Traps were furnished without nut and nipple. V1B, V2C and V3B were furnished with nut and nipple. V2 and V3 Traps were not. Victory Line Traps, only parts available are nuts and nipple, and seats.

No repairs for #4, #5, #4A and D4, and 5A and D5 Traps. Replace with 40-415 F & T Trap.

MEPCO STAINLESS STEEL CARTRIDGE REPAIR

(LOW PRESSURE THERMOSTATIC TRAP)



Trap Repair Model

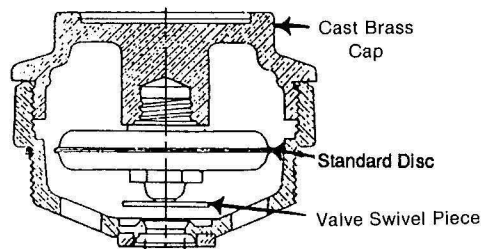
MANUFACTURER	NUMBERS	SIZE	PART NUMBER
Dunham-Bush/MEPCO	1E, and all #1 traps	1/2"	MEP-1950
Dunham-Bush/MEPCO	2E traps	3/4"	MEP-1990

MEPCO CAST BRASS REPAIR CARTRIDGE UNIT

FOR 1E, 2E, 3C TRAPS WITH INTEGRAL SEAT

PART NO.	MODEL	SIZE
ML9606	CA-1	1/2"
ML9630	CA-2	3/4"
ML9631	CA-3	1"

Includes: Body Cartridge,
cap, disc, and valve
replacement assembly.



FLOAT AND THERMOSTATIC TRAPS AND FLOAT TRAPS

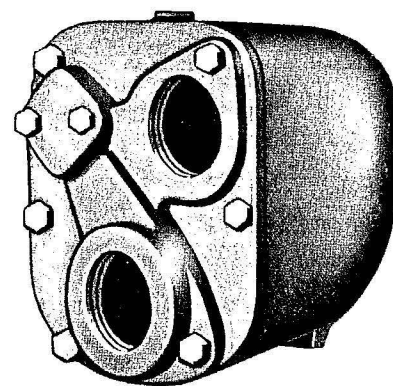
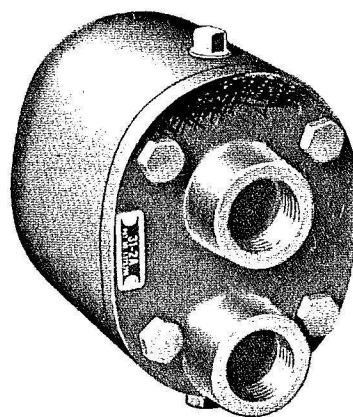
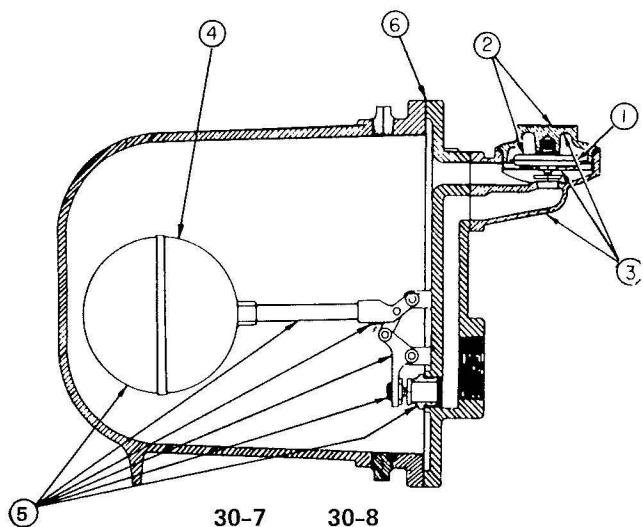
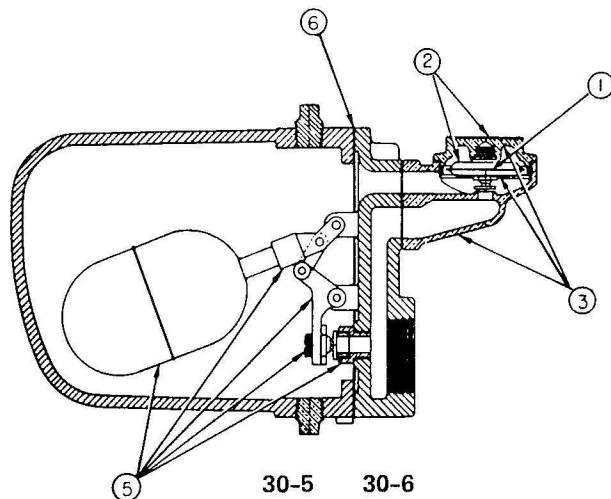
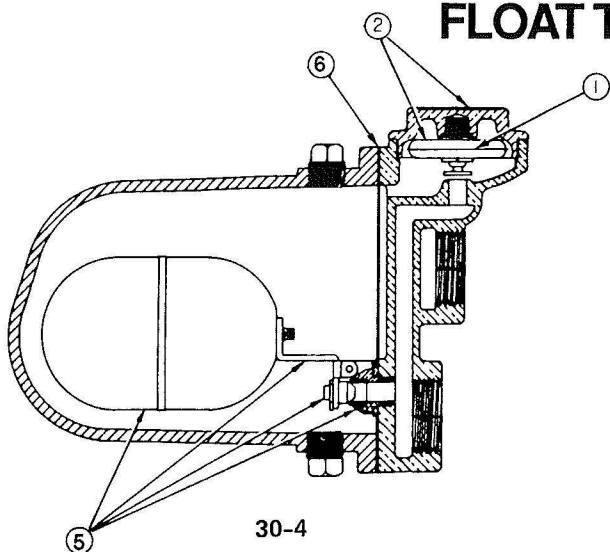
(INSTALLED PRIOR TO 1929)

REF. NO.	Size Tapping Trap Number ITEM	PART NUMBER						PART NUMBER				
		3/4"	1"	1"	1 1/4"	1 1/2"	1 1/2"	1 1/2"	3/4"	1"	3/4"	1"
		16 16A 16B 16C D16	17-18 17A 17B 17C D17 18A 18B	D16A D16E 17E D17A 18C D18	18E D18A	19E D19A 20 20A-20B 20C-20E D20A D20E	19 19A 19B	19C D19	22	23	22A 22B 22C D22 22E D22A	23A 23B 23C D23 23E D23A
1	Cap and Disc Assembly	C5838	C5838	C5838	C5838	C5838	C5838	C5838	X	X	C5838	C5838
2	Cap Gasket	X	X	X	D263	D342	X	X	C2331	D333	C2331	D333
	Recommended Replacement	40-215A	40-415A		40-515A	40-715A			40-415A			

- a. Trap Nos. 18, 18A, 18B, 18C and D18 have 1 1/4" Tappings
b. Trap No. 20 has 2" Tappings.

FLOAT & THERMOSTATIC TRAPS (#30 SERIES)

FLOAT TRAPS (#31 SERIES)



REF. NO.	SIZE TAPPING TRAP NUMBER ITEM	PART NUMBERS					
		1/2"	1/2"	3/4"	3/4"	3/4"	1"
		30-1	30-1A	30-2	30-2A	30-3	30-4
1	Thermo Disc Only	**	**	**	C5940	**	C5940
2	Cap and Disc Assembly ***	C5838	C5838	C5838	C5838	C5838	C5838
5	Internal Mechanism Complete - Float, Lever & Hinge, Valve & Clip, Seat*	ML7277	ML7277	ML7277	ML7278	ML7279	ML7279
6	Cap Gasket	C2331	C5698	C2331	C5698	C2331	C2331
REF. NO.	SIZE TAPPING TRAP NUMBER ITEM	PART NUMBERS					
		1 1/4"	1 1/2"	1 1/2"	1 1/2"	2"	2"
		30-5	30-6	30-7	30-7A	30-8	30-8A
1	Thermo Disc Only	C5940	**	C5942	C5940	C5942	C5942
2	Cap and Disc Assembly	C5838	C5838	C5863	C5838	C5863	C5863
3	Thermo Trap Complete w/Manifold Gasket	C5817 w/C3645	C5817 w/C3645	C5818 w/C3737	C5817 w/C3645	C5818 w/C3737	C5818 w/C3737
4	Float Ball only*	C8233	C8233	C259	C8233	C259	C259
5	Internal Mechanism Complete - Adj. Screw & Valve, Nut with Float, Float Arm, Seat & cap gasket.	ML7280	ML7280	ML7281	ML7282	ML7283	ML7283
6	Cap Gasket	D333	C2389	D263	D333	D342	D263

** Old style 1A Disc only - not available.

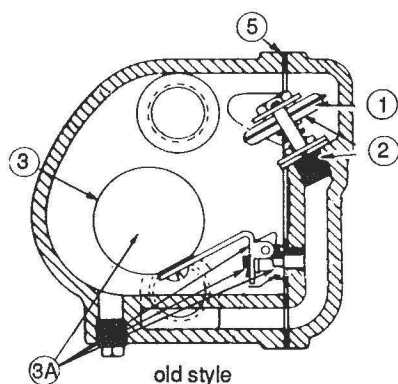
a) *V* Victory Line Traps require the same parts as the above models.

b) No. 31 Float Traps require same parts as above except that the Thermo Trap is omitted and is replaced with a Blind Flange.

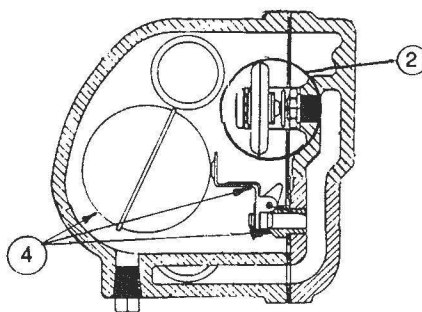
*** Thermostatic traps with worn or erroded seats can be repaired by using the CA-1 repair cartridge ML9609.

FLOAT & THERMOSTATIC TRAPS (#40 AND 44 SERIES)

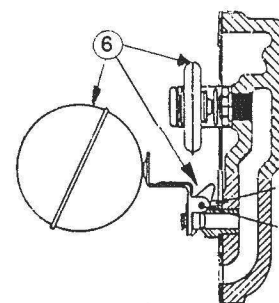
FLOAT TRAPS (41 & 45 series)



Nos. 40 Series Trap Construction



Nos. 40- A Series Trap Construction



Repair Part #6 Internal Mechanism Complete with Cap, for 40, 44, and 40- A series Traps

REFERENCE NUMBER AND ITEM

TRAP MODEL	TRAP SIZE	1 THERMO Disc/Only	2 THERMO Complete*	3 FLOAT Only	3A FLOAT & Lever	4 INTERNAL Mech.Cmplt	5 CAP Gskt	6 Internal Mech Cmplt w/cap
40-215 44-215A	3/4" 3/4"	C5940 C5940	ML12879* ML5953	--- ---		ML9897 ML9897	D5442 D5442	ML9632 ML9632
40-415 44-415A	1" 1"	C5940 C5940	ML12879* ML5953	N/A ---		ML9897 ML9897	D5442 D5442	ML9696 ML9696
40-515 44-515A	1-1/4" 1-1/4"	C5940 C5940	ML12879* ML5953	N/A ---		ML9898 ML9898	D5449 D5449	ML9634 ML9634
40-715 44-715A	1-1/2" 1-1/2"	C5940 C5940	ML12879* ML5953	N/A ---		ML9900 ML9900	D5449 D5449	ML9635 ML9635
40-230 44-230A	3/4" 3/4"	C5940 C5940	ML12879* ML5953	N/A ---		ML9896 ML9896	D5442 D5442	ML9693 ML9693
40-430 44-430A	1" 1"	C5940 C5940	ML12879* ML5953	N/A ---		ML9896 ML9896	D5442 D5442	ML9699 ML9699
40-530 44-530A	1-1/4" 1-1/4"	C5940 C5940	ML12879* ML5953	N/A ---		ML9903 ML9903	D5449 D5449	ML9633 ML9633
40-730 44-730A	1-1/2" 1-1/2"	C5940 C5940	ML12879* ML5953	N/A ---		ML9934 ML9934	D5449 D5449	ML9931 ML9931
40-275 44-275A	3/4" 3/4"	C6888 C6888	ML5954 ML5954	N/A ---		ML9899 ML9899	D5442 D5442	ML9636 ML9636
40-475 44-475A	1" 1"	C6888 C6888	ML5954 ML5954	N/A ---		ML9899 ML9899	D5442 D5442	ML9697 ML9697
40-575 44-575A	1-1/4" 1-1/4"	C6888 C6888	ML5954 ML5954	N/A ---		ML9895 ML9895	D5449 D5449	ML9638 ML9638
40-775 44-775A	1-1/2" 1-1/2"	C6888 C6888	ML5954 ML5954	N/A ---		ML9935 ML9935	D5449 D5449	ML9932 ML9932
40-2125 44-2125A	3/4" 3/4"	C6888 C6888	ML5954 ML5954	N/A ---		ML9901 ML9901	D5442 D5442	ML9637 ML9637
40-4125 44-4125A	1" 1"	C6888 C6888	ML5954 ML5954	N/A ---		ML9901 ML9901	D5442 D5442	ML9698 ML9637
40-5125 44-5125A	1-1/4" 1-1/4"	C6888 C6888	ML5954 ML5954	N/A ---		ML9902 ML9902	D5449 D5449	ML9700 ML9700
40-7125 44-7125A	1-1/2" 1-1/2"	C6888 C6888	ML5954 ML5954	N/A ---		ML9936 ML9936	D5449 D5449	ML9933 ML9933

Replace with #4 Internal Mechanism Complete

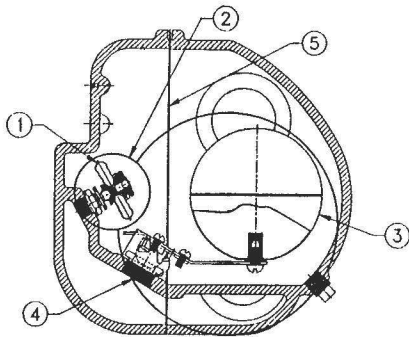
NOTES: 1) All No. 41 & 45 series traps require same parts as above except that the Thermo cage assembly is omitted and is replaced with C10039 plug.

2) All No. 44 series float traps require same parts as the 40 series except for the body. *ML12879 has old style brass cage.

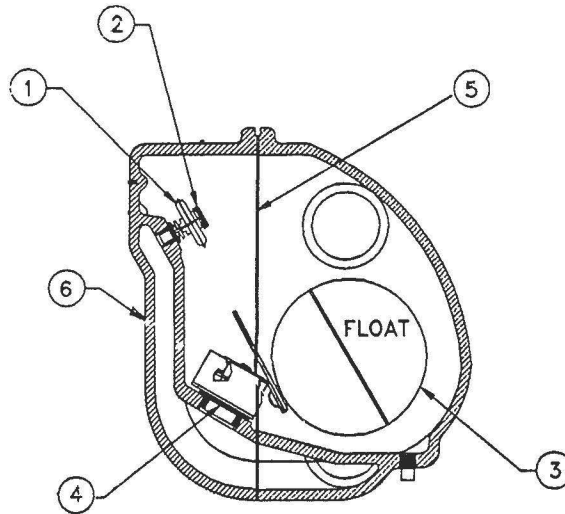
* 3) Gasket is not included in item 2 repair.
and has old style brass cage

FLOAT & THERMOSTATIC TRAPS

(#46 SERIES AND #48 SERIES)



MODEL 46 SERIES = 24 LBS.



MODEL 48 SERIES = 48 LBS.

REFERENCE NUMBER AND ITEM

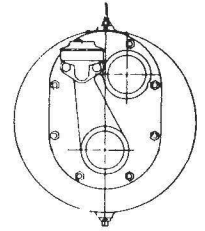
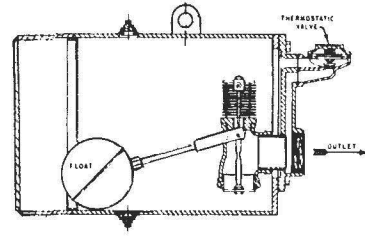
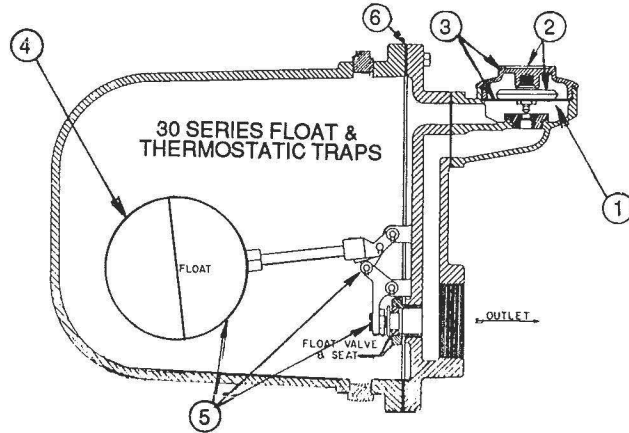
TRAP MODEL	TRAP SIZE	1 THERMO Disc/Only	2* THERMO Complete	3 FLOAT Only	4* INTERNAL Mech.Cmplt.	5 GASKET	6* TRAP Less Body	Complete TRAP
46-715	1-1/2"	C5940	ML5953	S-5286	ML12623	100421	ML12611	ML12607
46-815	2"	C5940	ML5953	S-5286	ML12623	100421	ML12613	ML12608
46-730	1-1/2"	C5940	ML5953	S-5286	ML12624	100421	ML12612	ML12609
46-830	2"	C5940	ML5953	S-5286	ML12624	100421	ML12614	ML12610
46-775	1-1/2"	C6888	ML5954	S-5286	ML12625	100421	ML12619	ML12615
46-875	2"	C6888	ML5954	S-5286	ML12625	100421	ML12620	ML12616
46-7125	1-1/2"	C6888	ML5954	S-5286	ML12626	100421	ML12621	ML12617
46-8125	2"	C6888	ML5954	S-5286	ML12626	100421	ML12622	ML12618
TRAP MODEL	TRAP SIZE	1 THERMO Disc/Only	2* THERMO Complete	3 FLOAT Only	4* INTERNAL Mech.Cmplt.	5 GASKET	6* TRAP Less Body	Complete TRAP
48-715	1-1/2"	C5940	ML5953	6103745	ML10079	A2-8892	ML10239	ML10071
48-815	2"	C5940	ML5953	6103745	ML10079	A2-8892	ML10240	ML10072
48-730	1-1/2"	C5940	ML5953	6103745	ML10080	A2-8892	ML10241	ML10073
48-830	2"	C5940	ML5953	6103745	ML10080	A2-8892	ML10242	ML10074
48-775	1-1/2"	C6888	ML5954	6103745	ML10081	A2-8892	ML10243	ML10075
48-875	2"	C6888	ML5954	6103745	ML10081	A2-8892	ML10244	ML10076
48-7125	1-1/2"	C6888	ML5954	6103745	ML10082	A2-8892	ML10245	ML10077
48-8125	2"	C6888	ML5954	6103745	ML10082	A2-8892	ML10246	ML10078

(2*) Thermo trap complete includes a seat, thermal disc w/valve, cage and nut.

(4*) Internal mechanism complete includes; a seat, valve, bracket, lever, floatball, screw and cap gasket.

(6*) Trap less body has all interior parts mounted & cap gasket.

FLOAT & THERMOSTATIC TRAPS HIGH CAPACITY - HIGH PRESSURE



TRAP NOS. SA30-930A, SA30-9125

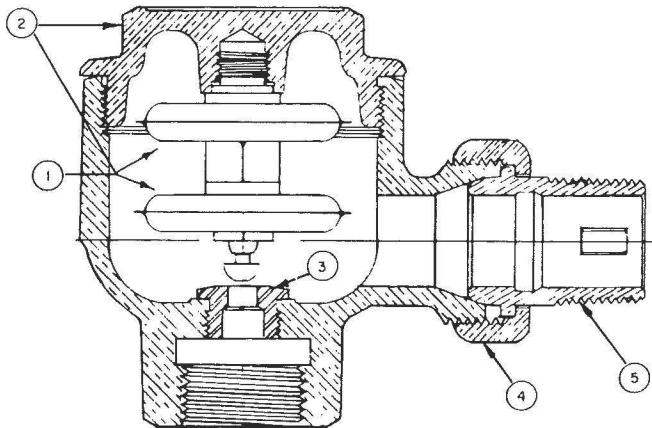
REF. NO.	SIZE TAPPING TRAP NUMBER	PART NUMBERS									
		1½"	2"	2"	2"	2"	2"	2"	2½"	2½"	2-1/2"
1	Thermo Disc Only	C6888	C6888	C5942	C6888	C5942	C5942	C5942	C5942	C5942	C6888
2	Cap and Disc Assembly	X	X	C5863	X	C5863	C5863	C5863	C5863	C5863	X
3	Thermo Trap Complete w/Manifold Gasket	B2-869 w/C3737	B2-869 w/C3737	C5818 w/C3737	B2-869 w/C3737	C5818 w/C3737	C5818 w/C3737	C5818 w/C3737	C5818 w/C3737	C5818 w/C3737	B2-869 w/C3737
4	Float Ball Only or Float Ball & Rod	C259	C259	90592	90592	C259	C259	C259	90593	90594	90593
5	Internal Mechanism Complete - Adj. Scr Valve, nut with Float, Float Arm(Rod) and seat and cap gasket.	ML7284	ML7285			N/A**	N/A**	ML7283			
6	Cap Gasket	B2-907	B2-907	B2-1067	B2-1067	D342	D342	D342	D263	D263	B2-907

a. 31-7AS and 31-8AS Traps require same parts as above except that the Thermo Trap is omitted and is replaced with A2-1750 Blind Flange.

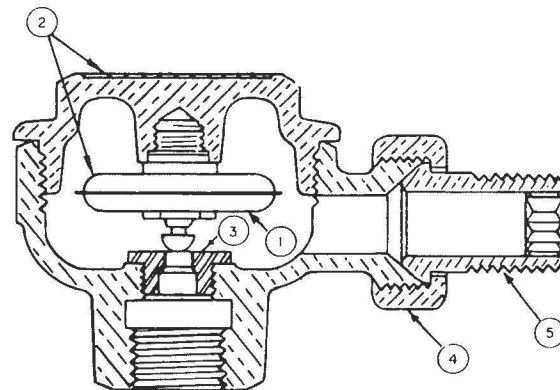
** If Internal Mechanism Parts are required replace Trap with SA30-815.

*** If Internal Mechanism Parts are required consult factory.

THERMOSTATIC TRAPS (HIGH PRESSURE)



TH-2A TH-3A



TH-1A

REF. NO.	SIZE TAPPING TRAP NUMBER ITEM	PART NUMBERS		
		1½"	¾"	1"
1	Disc Only	C6888	C6935	C5925
2	Cap and Disc Assembly	ML7295	ML7296	ML7297
3	Seat Only (Screw In)	C5915	C5915	C5923
4	Union Nut	C347	C346	C745
5	Union Nipple	C544	C1045	C1004

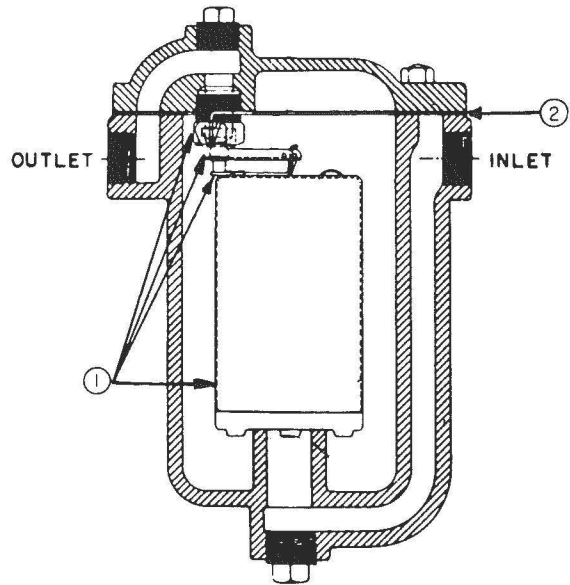
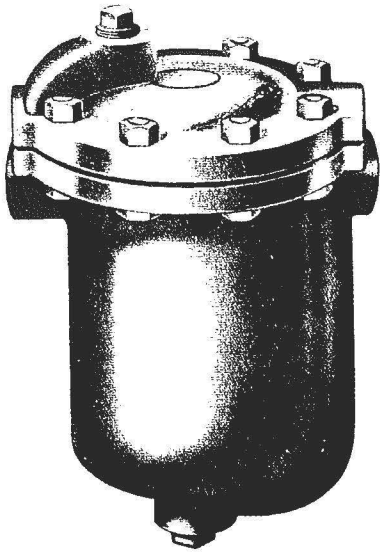
a. TH-2A and TH-3A Traps are furnished with compound Discs.

b. No repairs available for the following Traps: TH-1, 13B, 14B, 15B. Replace with: TH-1A, TH-1A, TH-2A, TH-3A.

NOTES

BUCKET TRAPS

OBS-A, OB-A



NOTE: EITHER SEAT SYMBOLS OR MAX. DIFF. PRESSURE MUST BE SHOWN ON REPAIR ORDERS

REF. NO.	SIZE TAPPING TRAP NUMBER ITEM	PART NUMBERS		
		1/2"	3/4"	1/2 & 3/4"
		OBS OBS-A	OBS OBS-A	OBS-B*
1	Internal Mechanism Complete - Bucket, Seat, and Valve**	ML5955	ML5956	ML9317
2	Cap Gasket	C6917	C6917	C6917

REF. NO.	SIZE TAPPING TRAP NUMBER ITEM	PART NUMBERS							
		1/2"	1/2"	3/4"	3/4"	1"	1"	1 1/4"	1 1/4"
		OB	OB-A	OB	OB-A	OB	OB-A	OB	OB-A
1	Internal Mech. Complete - Bucket, Seat, and Valve**	ML5957	ML5957	ML5958	ML5958	ML5959	ML5959	ML5960	ML5960
2	Cap Gasket	C6944	C6944	C6945	C6945	C6946	C6946	C6947	C6947

* Present Model.

** When ordering Internal Mechanism Complete, order one Cap Gasket.

Repairs for No. 81 and 81A are not available.
Replace with OBS-B

REPAIR PARTS - F & T GASKETS

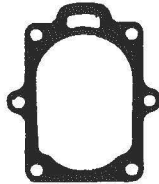
30 AND 40 SERIES

Scale .17:1



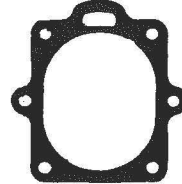
C5698

For 30-1A & 30-2A



D5442

For 40-215, 40-415
Any & all 40 Series
3/4" or 1"



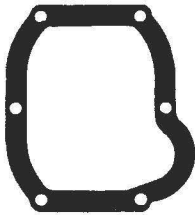
D5449

For 40-515 & 40-715
Any & all 40 Series
1-1/4" or 1-1/2"



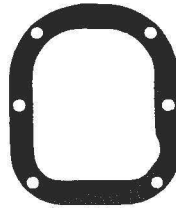
C2331

For 30-1, 30-2,
30-3 & 30-4



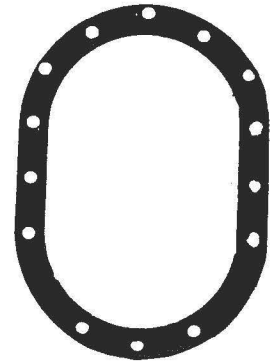
C2389

For 30-6



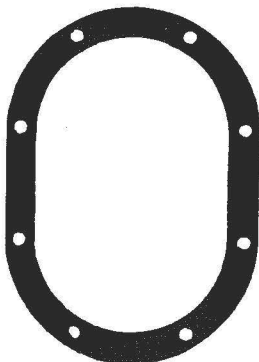
D333

For 30-5 & 30-7A



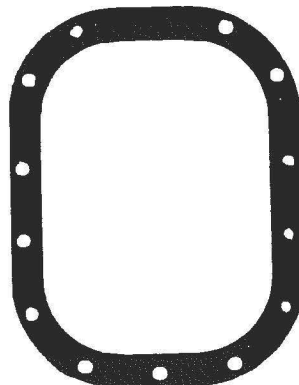
B2-907

For 30-7AS & 30-8AS



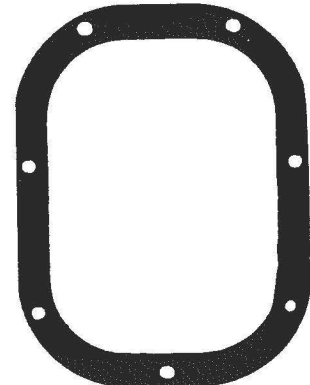
D263

For 30-7 & 30-8A



B2-1067

For SA30-8, SA30-815, SA30-830



D342

For 30-8, SS30-8,
SC30-8 & S30-8



3695 44th Street SE - Grand Rapids, MI 49512 - (P) 616-971-3420 (F) 616-971-3421 www.mepcollc.com