



MARSHALL ENGINEERED PRODUCTS CO.

FORM 1583C

HYDRONIC SPECIALTIES

EXPANSION TANKS

CONVERTERS

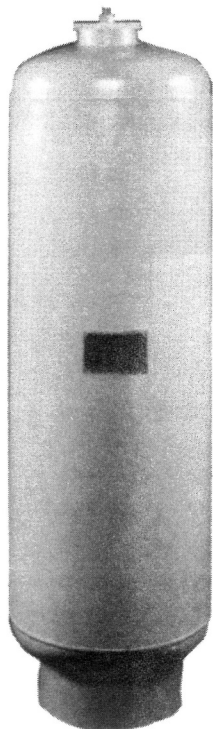
AIR SEPARATORS

PUMP DISCHARGE VALVE (PDV)

SUCTION DIFFUSERS

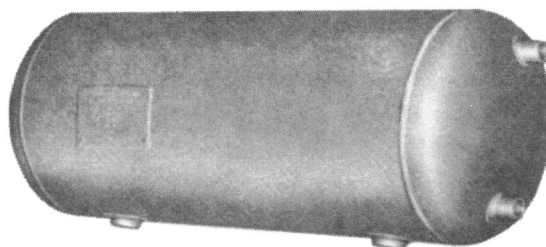


ASME BAG EXPANSION TANK

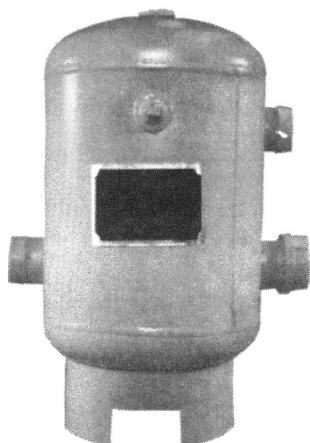


The MEPCO Bag Type Expansion Tank contains a full volume flexible bag which separates the water from the air cushion in the tank. The tank may be precharged to the minimum pressure of the system. Upon operation of the system, the water expands due to heating and begins to fill the flexible bag in the tank. As the bag fills with water, the air cushion is compressed causing a rise in pressure in the system. Through proper sizing of the expansion tank, this pressure increase is controlled and kept within the accepted range of the system. The inclusion of the bag in the expansion tank as a barrier between the air and water prevents any loss of precharge due to absorption. *Refer to form number 620.*

ASME EXPANSION COMPRESSION TANK



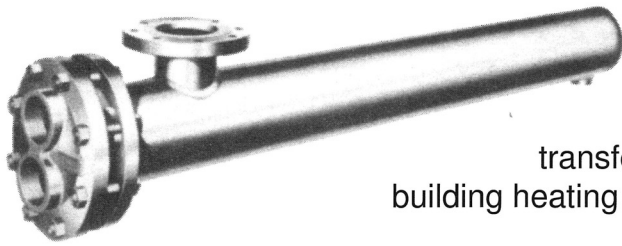
The MEPCO ASME Expansion Compression Tank accommodates the varying water volume in heating or chilled water systems. During system operation the water expands and contracts due to temperature changes. The air in the tank compresses causing a rise in the system pressure. With proper tank sizing, the pressure increase will be controlled and kept within the accepted range of the system. Also, by using fill drain valves, air control and containment of the system air is achievable. Tank capacities range from 15 gallons to 2,000 gallons. Telltale holes furnished in place of inspection openings are standard on all sizes 15 to 135 gallon. Two 2-inch plugged inspection openings are standard on sizes 175 through 505 gallon. An 11-inch by 15-inch manhole is criterion for equipment 525 gallon and larger. *Refer to form number 1575.*



ASME TANGENTIAL AIR SEPARATOR

The MEPCO ASME constructed Air Separator helps prevent water logged compression tanks. Its tangential design results in smaller unit requirements than a straight flow separator and provides air free fluid flow that protects against damage and system noise. Features include 125 PSIG design pressure and 500°F maximum operating temperatures. Optional strainers are available. *Refer to form number 1576.*

CONVERTER SECTION



TYPE L (Liquid to Liquid)
TYPE S (Steam to Liquid)

The MEPCO Type "S" Steam Converter transfers heat from a steam source to a water supply for building heating applications.

The MEPCO Type "L" Liquid Converters transfer heat from a high temperature and high pressure water source to a low pressure water supply for building heating applications.

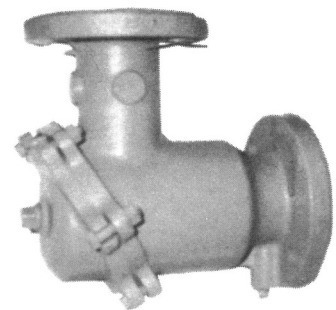
U-tube design allows free expansion and contraction of the tubes under changing operating conditions. The tube bundle is removable for inspection or repair purposes. *Refer to form number 1460 (Steam to Liquid) and form number 1461 (Liquid to Liquid).*

SUCTION DIFFUSERS

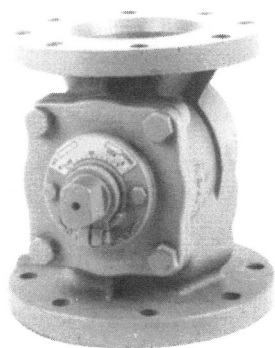
T "SD" SERIES SUCTION DIFFUSER

The MEPCO "SD" Series Suction Diffuser has numerous features built into one unit that provides the optimum flow and protection for the pump. The Suction Diffuser is constructed of cast iron. The cast iron units consist of 15 models, and are available in sizes from 2-inch x 1½-inch through 10-inch x 8-inch.

The MEPCO "SD" series is specifically designed to serve the needs of the commercial HVAC and industrial applications. The "SD" Series provides maximum flow efficiency at the suction side of the pump, while reducing space and fitting requirements. The Suction Diffuser eliminates the need for an equivalent length of ten pipe diameters of straight run required at the suction side of the pump by straightening the flow. The "SD" Series saves on the number of fittings by incorporating a system strainer, flow straightening device, and 90 degree elbow into a single unit. The adjustable foot aids in supporting the Suction Diffuser and the suction piping. *Refer to form number 1480.*



PUMP DISCHARGE VALVE (PDV)



The MEPCO Pump Discharge valve is designed to provide at least one more feature in every area of the valve's construction. First, while not being a check valve, gate valve, and balancing valve, it can also be used for metering the flow. Two Shrader valve metering connections are included as standard with each valve. Internally, the valve includes a bronze gland and stainless steel stem sleeve to assure a lifetime seal and ease of operation after it has been in the line for a period of time. This is unlike other cast iron pump discharge valves which tend to freeze up and render themselves useless for any future adjustments. *Refer to form number 1483.*

COUNT ON MEPCO FOR PERFORMANCE AND VALUE

Count on MEPCO to supply you with the best steam and hot water systems for churches, schools, offices, hospitals, apartment complexes, and other heating projects.

If you heat with steam or hot water, it pays to work with the heating specialists. Call on your MEPCO sales representative for expert advice today.

At MEPCO, every product reflects 100 years of unmatched engineering and manufacturing expertise.

Contact MEPCO for more details and application assistance... today.



MARSHALL ENGINEERED PRODUCTS CO.

3695 44th Street SE • Grand Rapids, Michigan 49512
Phone 616.971.3420 Fax 616.971.3421 www.mepcollc.com