



MARSHALL ENGINEERED PRODUCTS CO.

FORM 1516C

# STEAM SPECIALTIES

## Float and Thermostatic Trap - 30 Series

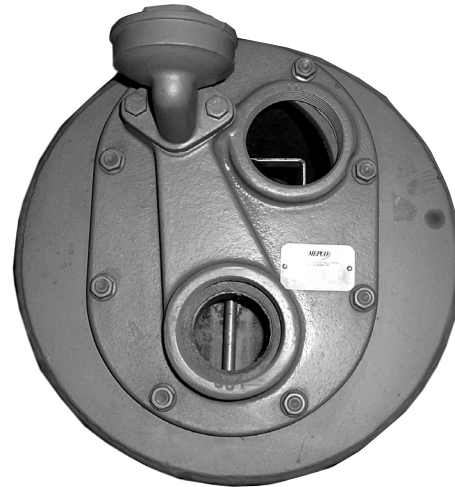
## Closed Float Trap - 31 Series

For Operating Pressures up to 125 lbs.

### APPLICATION

The MEPCO Float & Thermostatic Traps, Nos. 30 series and Closed Float Traps, Nos. 31 series are applicable to all types of steam pressure heating systems. The **30 series** traps' purpose is to move air and water while preventing steam from entering return piping. The **31 series** traps' purpose is to move water while preventing steam from entering the return piping. These traps are manufactured in ten models for handling capacities of 1,500 to 54,000 lbs. of condensate per hour and operate efficiently with pressures up to 60 lbs.

The 30 series, **SA30-9125A**, also handles capacities of 20,000- 150,000 lbs. of condensate/hr. and operating pressures up to 125 lbs.



### FEATURES & BENEFITS

**1. Simple, rugged construction.** This MEPCO trap is a mechanically simple and durable combination of a float and thermostatic trap. All working parts are made of non-corrosive metals especially adapted for this service.

**2. Sensitive thermostatic action.** Charging the thermostatic disc under high vacuum assures sensitive and positive response to temperature and pressure over entire operating range. Disc corrugations are shaped to reduce hinge action at the rim of the disc and evenly distribute disc motion. (Not applicable to the 31 series, closed float trap).

**3. Instantaneous valve action.** Design of the float valve assembly permits rapid and positive valve ac-

tion. Location of the valve assures a deep water seal at all times.

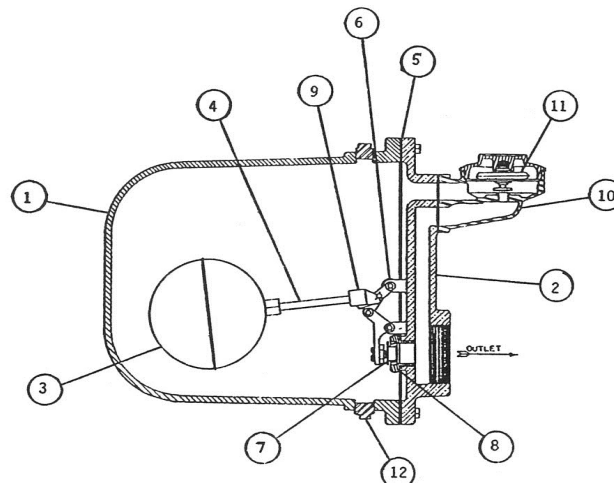
**4. Continuous rapid flow of water.** A lever operated discharge valve opens wide so that large volumes of water can flow continuously from trap.

**5. Thorough testing.** In addition to tests made of the completed trap, each thermostatic disc is tested before it is assembled into the trap.

**6. Minimum maintenance.** All working parts may be inspected, removed or repaired without disturbing piping. Clean-out plug permits easy flushing of dirt.

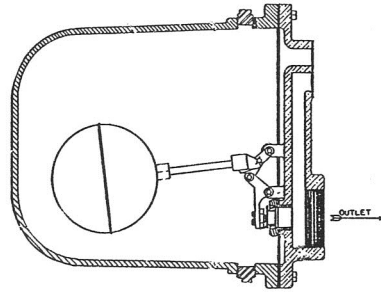
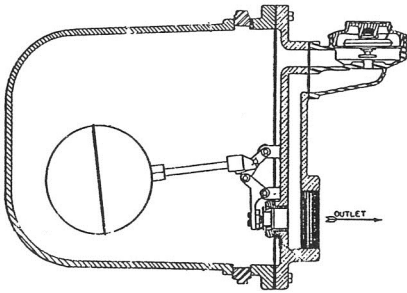
#### PARTS/MATERIALS - 30 & 31 series

ITEM	PART	MATERIAL
1	Body	Cast Iron
2	Cap	Cast Iron
3	Float Ball	Stainless Steel
4	Rod	Brass
5	Gasket	Non-asbestos Fiber
6	Pins	Stainless Steel
7	Valve	SST & Brass
8	Seat	SST & Brass
9	Linkage	SST & Brass
10	Thermo Trap	Cast Brass
11	Thermo Disc	SST & Brass
12	Plug, cleanout	Steel



MEPCO reserves the right to make changes in specifications and design without notice.

# Capacities



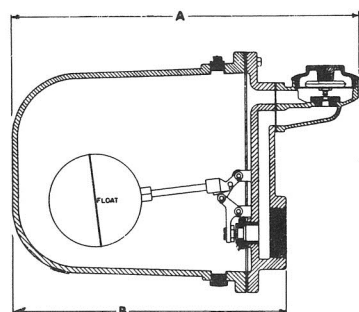
**NOTE:** The **30 series** (with thermostatic trap) & the **31 series** (less thermostatic trap) share the same dimensions and capacities.

## 30 & 31 Series

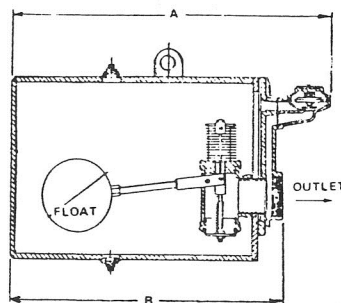
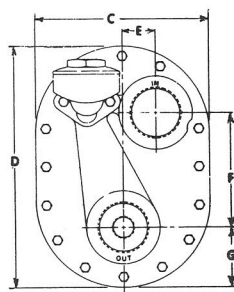
Model No.	30-8A	SA30-815	SA30-830	SA30-915A SA30-930A	30-7AS	30-8AS	
NPT SIZE	2"	2"	2"	2-1/2"	1-1/2"	2"	
ORIFICE	.719	1.032	.750	1.672	.500	.500	
PRESSURE DIFFERENTIAL PSI	1/4	2,000	6,400	2,500	16,200	1,500	1,500
	1/2	3,000	7,500	3,500	18,000	2,750	2,750
	1	4,500	9,300	5,500	22,000	3,500	3,500
	2	7,500	13,000	8,500	30,000	4,750	4,750
	5	10,500	16,500	11,500	38,000	6,300	6,300
	10	13,000	21,000	14,500	45,000	7,750	7,750
	15	15,500	24,000	17,000	49,000	9,250	9,250
	20			19,000	51,000	10,500	10,500
	25			20,000	52,000	12,250	12,250
	30			21,000	54,000	12,500	12,500
	40					13,500	13,500
	50					14,500	14,500
	60					15,500	15,500

Capacities given are continuous discharge capacities in pounds of condensate per hour at pressure differential indicated, determined by tests conducted according to ASME Performance test Code 39.1.1980. Apply safety factor as required per application. Condensate within 5 degrees of steam temperature.

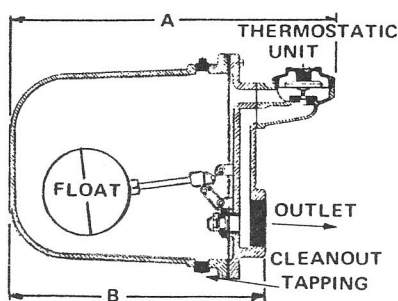
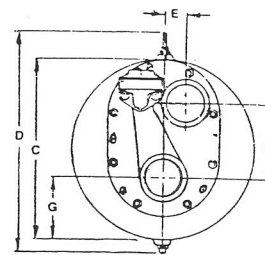
# Dimensions



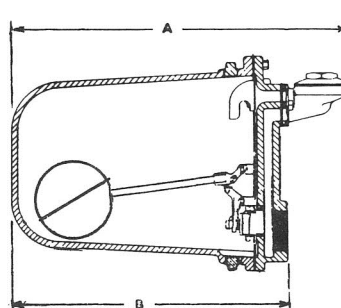
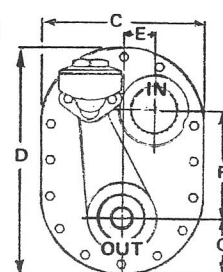
Trap Nos. 30-7AS, 30-8AS, & 30-8A



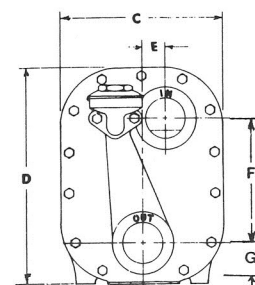
Trap No. SA30-930A & SA30-915A



TRAP NO. 30-8A



Trap Nos. SA30-815 & SA30-830



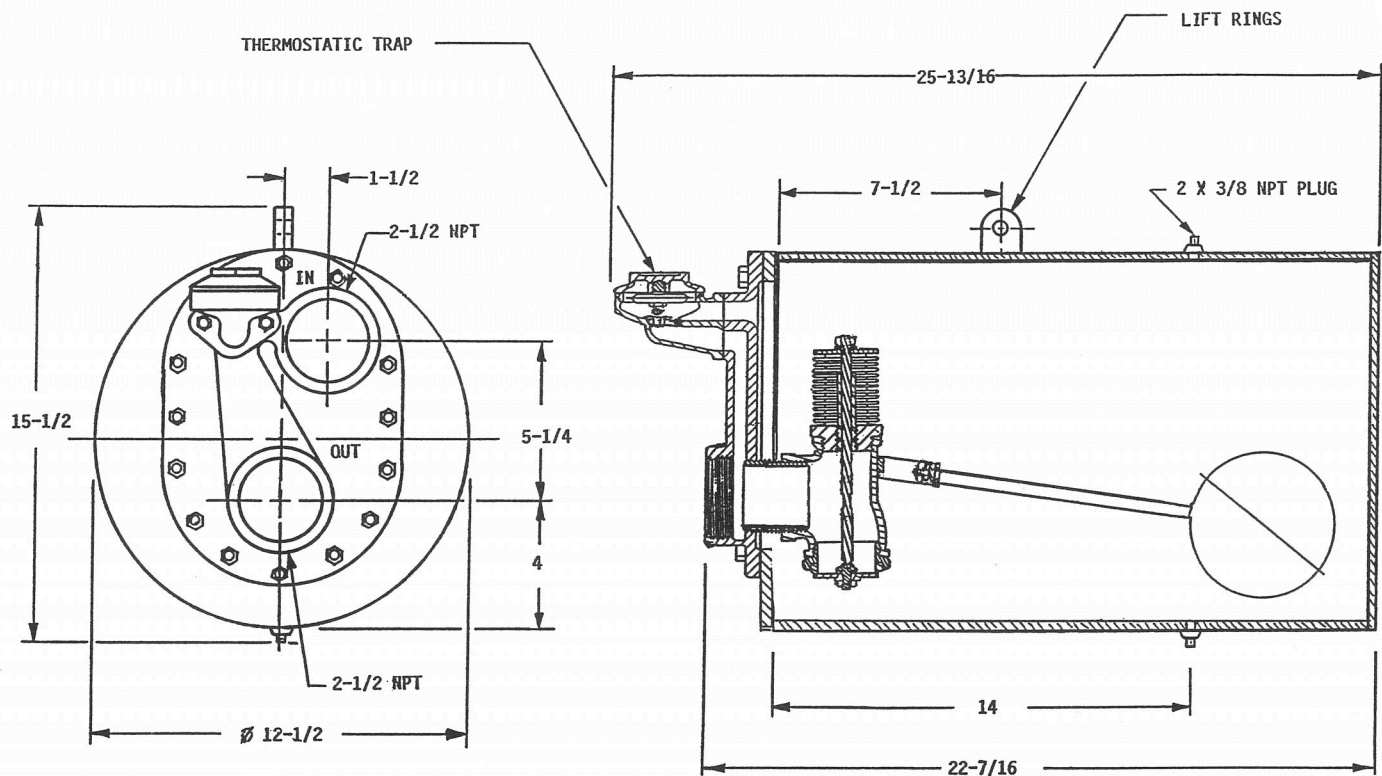
## Dimensions

### 30 & 31 Series

Model No.	30-7AS	30-8AS	30-8A	SA30-815	SA30-830	SA30-915A SA30-930A
NPT SIZE	1-1/2"	2"	2"	2"	2"	2-1/2"
ORIFICE	.500	.500	.719	1.032	.750	1.672
A	15-7/8	15-7/8	15-7/8	18-3/4	18-3/4	23-5/8
B	12-1/2	12-1/2	12-1/2	15-3/8	15-3/8	20-1/4
C	7-7/8	7-7/8	7-7/8	9-1/8	9-1/8	12-3/4
D	11	11	11	12	12	15-3/4
E	1-1/2	1-1/2	1-1/2	1-3/8	1-3/8	1-1/2
F	5-3/8	5-3/8	5-3/8	6-7/8	6-7/8	5-1/4
G	2-3/4	2-3/4	2-3/4	2-1/4	2-1/4	4-1/4
WGT	41 lbs.	41 lbs.	41 lbs.	69 lbs.	69 lbs.	95 lbs.



# Dimensions and Capacities for Model SA30-9125A



## Capacities for SA30-9125A Trap

MODEL NO.	ORIFICE SIZE	Pressure Differential, PSI								
		1/4	1/2	1	2	5	10	15	20	25
SA30-9125A	1.953	20,000	25,000	35,000	45,000	61,000	75,000	87,000	100,000	108,000

continued

MODEL NO.	Pressure Differential, PSI								
	30	40	50	60	75	90	100	125	
SA30-9125A	115,000	123,000	130,000	136,000	142,000	145,000	147,000	150,000	

Capacities given are continuous discharge capacities in pounds of condensate per hour at pressure differential indicated, determined by tests conducted according to ASME Performance test Code 39.1. 1980. Apply Safety Factor as required per application. Condensate within 5 degrees of steam temperature.



MARSHALL ENGINEERED PRODUCTS CO.

3695 44th Street SE, Grand Rapids, Michigan 49512

Phone 616.971.3420 Fax 616.971.3421 www.mepcolic.com