



Base Mounted Centrifugal Pumps Type RB06, RB07 & RB09

REPAIR PARTS

NOMENCLATURE

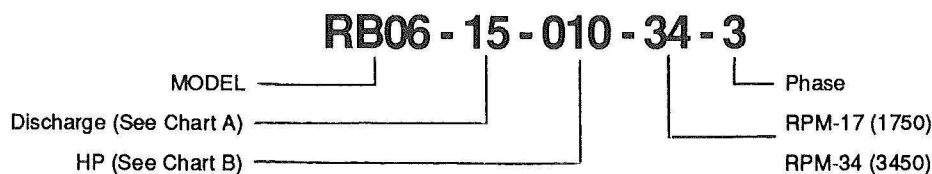


CHART A

10 = 1"
12 = 1-1/4"
15 = 1-1/2"
20 = 2"
25 = 2-1/2"

CHART B

010 = 1 HP
015 = 1-1/2 HP
020 = 2 HP
030 = 3 HP
050 = 5 HP
075 = 7-1/2 HP
100 = 10 HP
150 = 15 HP
200 = 20 HP
250 = 25 HP
300 = 30 HP
400 = 40 HP
500 = 50 HP
600 = 60 HP

ORDERING PROCEDURE

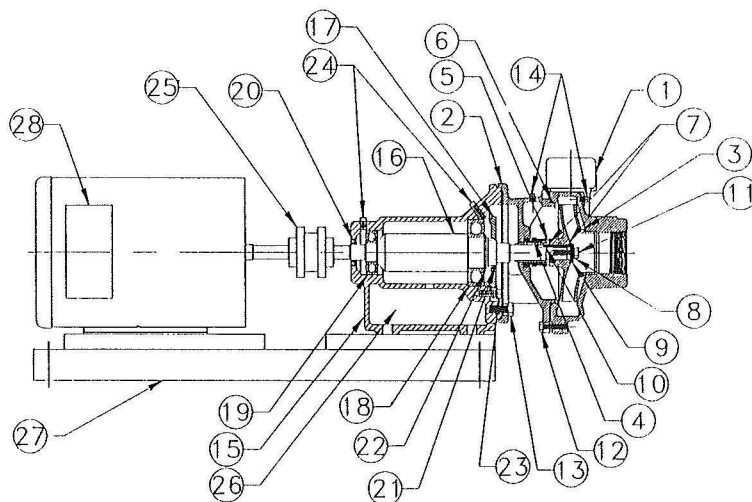
Contact your sales rep to orders parts, If you do not know who your sales rep is contact the factory for help in locating your sales rep.

Complete description is required when ordering.

When a part number is not known or shown in the parts catalog, the complete model and serial number of the unit must be given.

MEPCO reserves the right to substitute interchangeable parts.

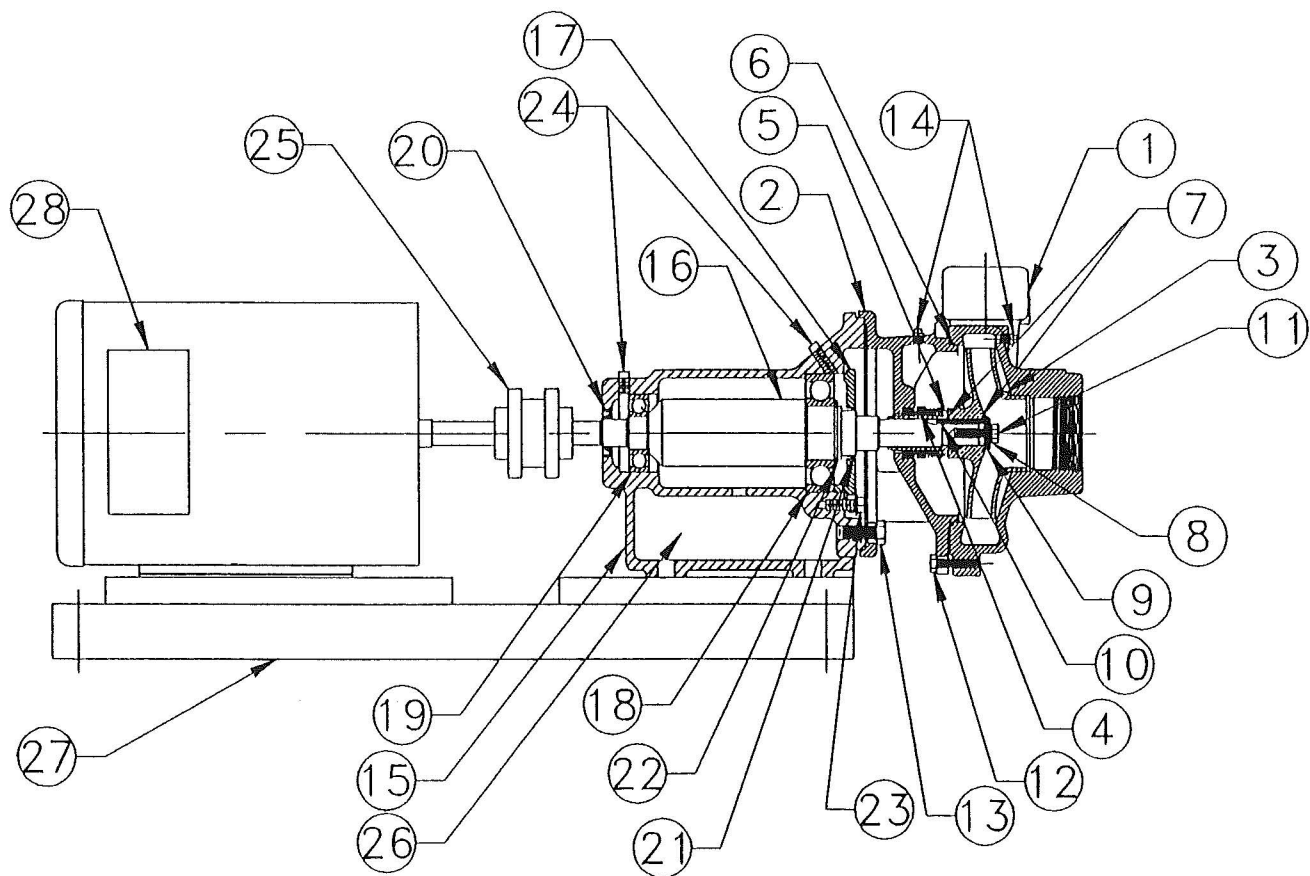
ITEM	PART #	DESCRIPTION
1	D2-1765	CASE-RB06-1-1/2 CAST IRON
1	D2-1766	CASE-RB06-2 CAST IRON
1	D2-1778	CASE-RB09-1-1/2 CAST IRON
1	D2-1779	CASE-RB09-2-1/2 CAST IRON
1	D2-1780	CASE-RB06 1-1/2 BRONZE
1	D2-1781	CASE-RB06 2-1/2 CAST IRON
1	D2-1782	CASE-RB06 2-1/2 BRONZE
1	D2-1783	CASE-RB07-1-1/2 CI
1	D2-1784	CASE-RB07-1-1/4 CI
1	D2-1794	CASE-RB06-2 BRONZE
1	D2-1795	CASE-RB09-1-1/2 BRONZE
1	D2-1796	CASE-RB09-2-1/2 BRONZE
1	D2-1801	CASE-RB09-2 CAST IRON
1	D2-1802	CASE-RB09-2 BRONZE
1	D2-1803	CASE-RB07-1-1/4 BRONZE
1	D2-1804	CASE-RB07-1-1/2 BRONZE
1	D2-1810	CASE-RB07-2 CAST IRON
1	D2-1811	CASE-RB07-2-1/2 CAST IRON
1	D2-1812	CASE-RB07-2 BRONZE
1	D2-1813	CASE-RB07-2-1/2 BRONZE
2	D2-1767	ADAPTER-RB06 213-215 CI
2	D2-1773	ADAPTER-RB07 213-215 CI
2	D2-1785	ADAPTER-RB06 213-215 BRONZE
2	D2-1790	ADAPTER-RB09 213-215 CI
2	D2-1798	ADAPTER-RB09 213-215 BRONZE
2	D2-1805	ADAPTER-RB07 213-215 BRONZE



ITEM	PART #	DESCRIPTION
3	C2-4410	IMPELLER RB07-1-1/2 BRONZE
3	C2-4438	IMPELLER RB06-1-1/2 BRONZE
3	C2-4456	IMPELLER RB06-2 BRONZE
3	C2-4479	IMPELLER-RB06-2-1/2 143-215 BRONZE
3	C2-4486	IMPELLER-RB06-1-1/2 CAST IRON
3	C2-4487	IMPELLER-RB06-2 CAST IRON
3	C2-4488	IMPELLER-RB06-2-1/2 143-215 CI
3	C2-4490	IMPELLER-RB07-1-1/2 CAST IRON
3	C2-4491	IMPELLER-RB07-1-1/4 BRONZE

ITEM	PART #	DESCRIPTION
3	C2-4492	IMPELLER-RB07-1-1/4 CAST IRON
3	C2-4493	IMPELLER-RB09-1-1/2 143-215 BRONZE
3	C2-4495	IMPELLER-RB09-2-1/2 143-215 BRONZE
3	C2-4505	IMPELLER-RB09-1-1/2 143-215 CI
3	C2-4507	IMPELLER-RB09-2-1/2 143-215 CI
3	C2-4514	IMPELLER-RB09-2 143-215 BRONZE
3	C2-4516	IMPELLER-RB09-2 143-215 CI
3	C2-4521	IMPELLER-RB07-2 143-215 BRONZE
3	C2-4523	IMPELLER-RB07-2-1/2 143-215 BRONZE
3	C2-4540	IMPELLER-RB07-2 143-215 CI
3	C2-4542	IMPELLER-RB07-2-1/2 143-215 CI
4		SEAL KIT SEE CHART
5		SLEEVE (Intergal Part of Seal kit)
6		O-RING-CASE (Intergal Part of Seal kit)
7		O-RING-IMPELLER (Intergal Part of Seal kit)
8		WASHER-SEALING (Intergal Part of Seal kit)
9		WASHER-IMPELLER (Intergal Part of Seal kit)
10		KEY-IMPELLER (Intergal Part of Seal kit)
11		SCREW-CAP (Intergal Part of Seal kit)
12	102S07A1	SCREW-CAP STEEL
12	102S07A4	SCREW-CAP STEEL
13	102S06A3	SCREW-CAP STEEL
13	102S07A4	SCREW-CAP STEEL
14	S-4328	PLUG-STEEL
14	101S01A1	PLUG-BRASS
15	D2-1821	BEARING FRAME 143-215
15	D2-1833	BEARING FRAME 254-364
16	D2-1822	SHAFT 143-215
16	100211	SHAFT 254-364
17	B2-5320	BEARING CAP 143-215
17	100083	BEARING CAP 254-364
18	S-4994	BEARING 143-215
18	S-5002	BEARING 254-364
19	S-4993	BEARING 143-215
19	S-4994	BEARING 254-364
20	S-4991	LIP SEAL 143-215
20	S-4992	LIP SEAL 254-364
21	S-4992	LIP SEAL 143-215
21	S-5095	LIP SEAL 254-364
22	S-4995	RETAINING RING 143-215
22	S-5001	RETAINING RING 254-364
23	102S06A2	WASHER HEAD BOLT
23	102S06A3	WASHER HEAD BOLT
24	S-4328	PLUG-STEEL
25		COUPLING SEE CHART
26	ML10874	BEARING ASSEMBLE 143-215
26	ML11935	BEARING ASSEMBLE 254-364
27	100016	BASE 143-215
27	100201	BASE 254-364
MOTORS (1750 RPM)		
28	S-2694	MOTOR 1 HP 1 PH-ODP-143T
28	S-2695	MOTO 1-1/2 HP 1 PH-ODP-145T
28	S-2698	MOTOR 1 HP 3 PH-ODP-143T
28	S-2699	MOTOR 1-1/2 HP 3 PH-ODP-145T
28	S-2717	MOTOR 2 HP 1 PH-ODP-182T
28	S-2718	MOTOR 2 HP 3 PH-ODP-145T
28	S-2719	MOTOR 3 HP 3 PH-ODP-182T
28	S-2720	MOTOR 5 HP 3 PH-ODP-184T
28	S-2721	MOTOR 7-1/2 HP 3 PH-ODP-213T
28	S-2915	MOTOR 3 HP 1 PH-ODP-184T

ITEM	PART #	DESCRIPTION
28	S-2694E	MOTOR 1 HP 1 PH-TEFC-143T
28	S-2695E	MOTO 1-1/2 HP 1 PH-TEFC-145T
28	S-2698E	MOTOR 1 HP 3 PH-TEFC-143T
28	S-2699E	MOTOR 1-1/2 HP 3 PH-TEFC-145T
28	S-2717E	MOTOR 2 HP 1 PH-TEFC-182T
28	S-2718E	MOTOR 2 HP 3 PH-TEFC-145T
28	S-2719E	MOTOR 3 HP 3 PH-TEFC-182T
28	S-2720E	MOTOR 5 HP 3 PH-TEFC-184T
28	S-2721E	MOTOR 7-1/2 3 PH-TEFC-213T
28	S-2915E	MOTOR 3 HP 1 PH-TEFC-184T
MOTORS (3450 RPM)		
28	S-2697	MOTOR 2 HP 1 PH-ODP-145T
28	S-2702	MOTOR 2 HP 3 PH-ODP-145T
28	S-2703	MOTOR 3 HP 3 PH-ODP-145T
28	S-2704	MOTOR 5 HP 3 PH-ODP-182T
28	S-4986	MOTOR 15 HP 3 PH-ODP-215T
28	S-4999	MOTOR 10 HP 3 PH-ODP-213T
28	S-5047	MOTOR 7-1/2 HP 3 PH-ODP-184T
28	S-2697E	MOTOR 2 HP 1 PH-TEFC-145T
28	S-2702E	MOTOR 2 HP 3 PH-TEFC-145T
28	S-2703E	MOTOR 3 HP 3 PH-TEFC-145T
28	S-2704E	MOTOR 5 HP 3 PH-TEFC-182T
28	S-4999E	MOTOR 10 HP 3 PH-TEFC-213T
28	S-5047E	MOTOR 7-1/2 HP 3 PH-TEFC-184T
28	S-5125	MOTOR 20 HP 3 PH-ODP-254T
28	S-5126	MOTOR 25 HP 3 PH-ODP-256T
28	S-5127	MOTOR 30 HP 3 PH-ODP-284TS
28	S-5128	MOTOR 40 HP 3 PH-ODP-286TS
28	S-5129	MOTOR 50 HP 3 PH-ODP-324TS
28	S-5130	MOTOR 60 HP 3 PH-ODP-326TS



SEAL KITS

COUPLINGS

SEAL KITS FOR RB06, RB07, & RB09

MOTOR FRAME	SEAL MATERIAL	PUMP TYPE	PART NUMBER
143/215	BUNA N	BF	ML11775
143/215	EPT	BF	ML11776
143/215	VITON	BF	ML11777
143/215	BUNA N	AB	ML11778
143/215	EPT	AB	ML11779
143/215	VITON	AB	ML11780
143/215	BUNA N	AI	ML11781
143/215	EPT	AI	ML11782
143/215	VITON	AI	ML11783
254/326	BUNA N	BF	ML11784
254/326	EPT	BF	ML11785
254/326	VITON	BF	ML11786
254/326	BUNA N	AB	ML11787
254/326	EPT	AB	ML11788
254/326	VITON	AB	ML11789
254/326	BUNA N	AI	ML11790
254/326	EPT	AI	ML11791
254/326	VITON	AI	ML11792

COUPLINGS

PART NUMBER	RPM	1 PHASE HP	3 PHASE HP
ML12115	1750	3/4	3/4
ML11848	1750	1	1
ML12116	1750	1-1/2	1-1/2 & 2
ML11849	1750	2	3
ML12117	1750	---	5
ML11850	1750	---	7-1/2
ML11851	3450	1-1/2 & 2	1-1/2 & 2
ML11852	3450	---	3
ML11853	3450	---	5 & 7-1/2
ML12118	3450	---	10 & 15
ML11931	3450	---	20 & 25
ML11932	3450	---	30 & 40
ML11933	3450	---	50 & 60

SEAL KIT INCLUDES; SEAL, SLEEVE, CASE O-RING,
IMPELLER O-RING, SEALING WASHER, IMPELLER
WASHER & CAP SCREW

NOTE: BF = BRONZE FITTED, AB = ALL BRONZE,
AI = ALL IRON

MOTOR DATA (HP)								
	ODP				TEFC			
	1 PHASE		3 PHASE		1 PHASE		3 PHASE	
FRAME	1750 RPM	3500 RPM	1750 RPM	3500 RPM	1750 RPM	3500 RPM	1750 RPM	3500 RPM
143T	1	1 1/2	1	1 1/2	1	1 1/2	1	1 1/2
145T	1 1/2	2	1 1/2,2	2,3	1 1/2	2	1 1/2,2	2
182T	2	3	3	5	2	3	3	3
184T	3	5	5	7 1/2	3	5	5	5
213T	5	7 1/2	7 1/2	10	5	7 1/2	7 1/2	7 1/2
215T	7 1/2,10	10	—	15	7 1/2,10	10	—	10
254T	—	—	—	20	—	—	—	15
256T	—	—	—	25	—	—	—	20
284TS	—	—	—	30	—	—	—	25
286TS	—	—	—	40	—	—	—	30
324TS	—	—	—	50	—	—	—	40
326TS	—	—	—	60	—	—	—	50
364TS	—	—	—	—	—	—	—	60



3695 44th Street SE Grand Rapids, MI 49512 - (P) 616-971-3420 (F) 616-971-3421 - www.mepcollc.com